



LX20 Handheld Primary Light User Manual

www.diverite.com

800-495-1046

December 2014

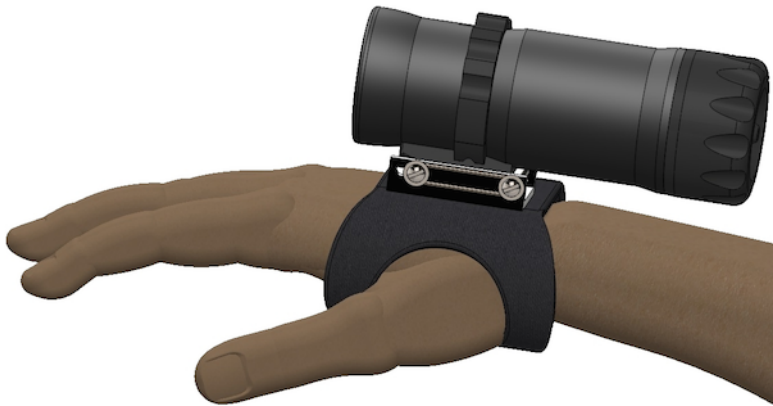
Table of Contents

Product Description	1
Tech Specs	3
Important WARNINGS	4
Installing the batteries	5
Adjusting the hand mount	6
Attaching the LX20 to the hand mount	7
Turning the LX20 on and off	8
Care and Maintenance.....	9
Travelling with the LX20	10
Warranty Information.....	11
Activating and Utilizing your Warranty	11



Product Description

The LX20, a compact, handheld primary light, stands brightly in a class of its own. At only 5.8-inches (15 cm) in length and 2.15-inches (5.5 cm) in diameter, it's small in size and big in brightness. With 20,000 LUX at approximately 6,500 Kelvin, the LX20's brightness out does most corded primary lights on the market today. Designed as a primary light, the LX20's 6-degree concentrated light beam, reflecting off a polished metal reflector, punches through the water lighting the way with a clean center spot. Its compact design and provided quick release soft hand mount make it ideal for any type of diving requiring a good light source as well as travelling where weight matters.



Built around a unique LED chip that maximizes output and efficiency, the LX20 has three modes; high power, low power, and strobe. Using four, Lithium Ion rechargeable 18650 3400ma protected-circuit batteries, the LX20 burns for four hours on high power, six hours on low power, and 36 hours in strobe mode. Making sure each light meets the high standards it was designed under, every light is individually tested and the average LUX is measured at one meter using a Konica Minolta Chroma Meter.

An integrated microprocessor control unit monitors battery voltage to keep the light operating at its peak efficiency. As battery voltage drops, light output steps down eliminating the possibility of suddenly being left in the dark due to a dead battery. The light alerts the diver of this step down in light output by a series of flashes, after which, the light produces another 20-minutes of usable light.

With a 500 foot (152 m) depth rating, a rotary magnetic on/off switch, and a double o-ring seal body providing proven protection against flooding, the LX20 excels under all the rigors of diving.

Providing reliability, durability, and a light output brightness few other lights can boast, the LX20 is the next generation of technology-driven handheld lights that will take your diving to new levels whether exploring caves, penetrating wrecks, or night diving on a reef.



Tech Specs

- Light output: 20,000 LUX
- Beam angle: 6-degree spot
- Light color temperature: Approximately 6500 Kelvin
- Batteries: Four Lithium Ion rechargeable 18650 3400ma protected-circuit
- Burn time
 - High power: 4 hours at 20,000 LUX
 - Low power: 6 hours at 13,000 LUX
 - Strobe: 36 hours at 20,000 LUX
- 20-minute burn time after light output step down from full power
- Strobe cycle time: 100ms on then 900ms off
- Mount: Quick release soft hand mount
- Activation: Rotary magnetic on/off switch
- Size: 5.8 in. (15cm) length, 2.15 in. (5.5cm) diameter
- Weight: 1.25 lbs. (0.56kg)
- Buoyancy: 8 ounces (227g) negative in water
- Charging time: Up to 9 hours from complete discharge
- Depth rating: 500 feet (152m)
- LED chip: CREE XM-L2 Cool White
- Compliance: RoHS compliant
- Made in the USA



Important WARNINGS

- Read this manual carefully before diving with the LX20 Handheld light. You should fully understand how this dive light works and that you are proficient in its use prior to diving.
- The LX20 Handheld is an electronic device and electronic devices can fail. NEVER dive this light without two back up lights.
- Never short the two contact rings on the battery pack with a metal object. This can cause a shock hazard.
- Before using your LX20 Handheld it is extremely important that you read and understand each warning, as well as warnings and cautions that appear throughout the manual. Failure to do so could result in damage to or loss of equipment, serious personal injury, or death.
- Before diving, you should have the proper training from a qualified instructor and obtain certification from a recognized training agency.

Installing the batteries

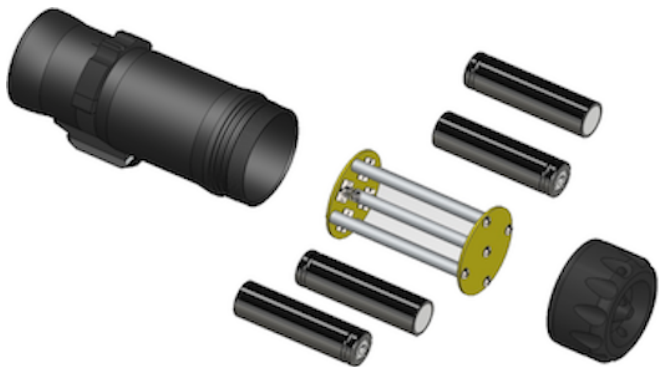
Four rechargeable lithium ion batteries power the LX20. The batteries must be charged and installed in the battery housing before being inserted in the LX20.

NOTE: Charge the batteries before installing them using the provided Nitecore Intelligent Charger. Follow Nitecore's instructions to charge the batteries.

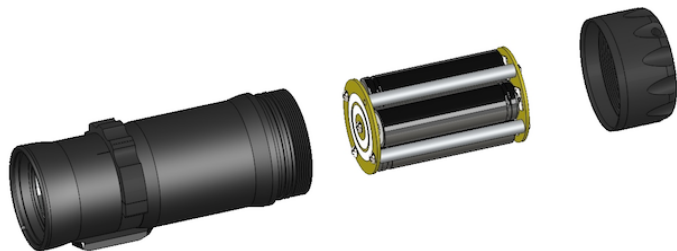
WARNING: Never short the two contact rings on the battery pack with a metal object. This can cause a shock hazard.

To install the batteries:

1. Unscrew the cap from the end of the LX20.
2. Remove the battery pack.
3. Install the batteries lining up the plus (+) and minus (-) indications on the batteries and the pack.



4. Slide the battery pack into the LX20 with the contact rings on the top of the pack being installed first.
5. Screw the cap back on making sure it is tightened with a snug fit.



Adjusting the hand mount

The hand mount can be mounted on your left or right hand. It attaches to the hand using the Velcro strap. The open end of the hand mount is for the thumb and helps to keep the light secure and in place on your hand while diving.

To adjust the hand mount:

1. Loosen the Velcro strap.
2. Slide your hand into the hand mount placing your thumb through the open end on the side of the hand mount.
3. Tighten the Velcro strap so that the hand mount is secure and comfortable on your hand.

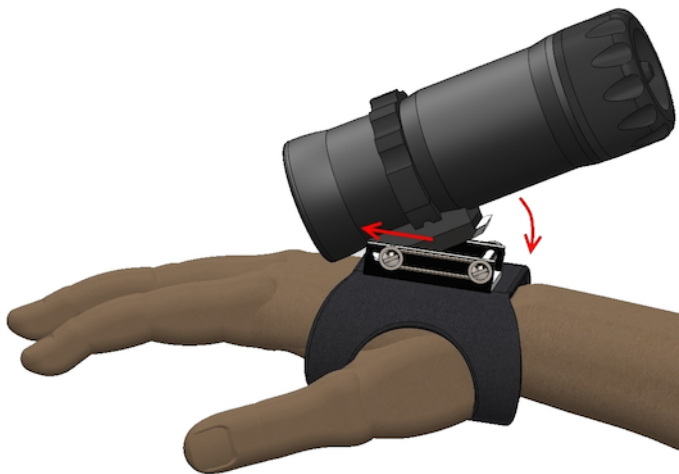


Attaching the LX20 to the hand mount

The LX20 can be attached to the hand mount with it on or off of your hand. The light mount is spring-loaded to hold the light in place, and makes it easy to attach and remove the light.

To attach the LX20 to the hand mount on your RIGHT hand:

1. Line up the clip on the base of the LX20 with the receiver on the hand mount.
2. Slip the front of the clip on the LX20 under the front bar of the receiver on the hand mount.
3. Push the LX20 forward and then push down on the LX20 until it snaps into place in the receiver.



To attach the LX20 to the hand mount on your LEFT hand:

1. Unscrew the receiver from the hand mount.
2. Turn it 180 degrees and reattach it to the hand mount.
3. Follow the instructions above for attaching the LX20 to the hand mount.

Turning the LX20 on and off

The LX20 has a rotary magnetic on/off switch that can easily be used underwater with gloves.

To turn the light on or off:

1. Rotate the magnetic switch to the right to turn the light on.

The white line on the switch must line up with the white line on the light's body.

2. Rotate the magnetic switch to the left to turn the light off.



To switch the LX20 to low power mode:

1. Rotate the magnetic switch on, off, and back on within three seconds.
2. Rotate the magnetic switch off to turn the light off or to off for three seconds and then back on for full power mode.

To switch the LX20 to strobe mode:

1. Rotate the magnetic switch on, off, and back on two times within three seconds.
2. Rotate the magnetic switch off to turn the light off or to off for three seconds and then back on for full power mode.



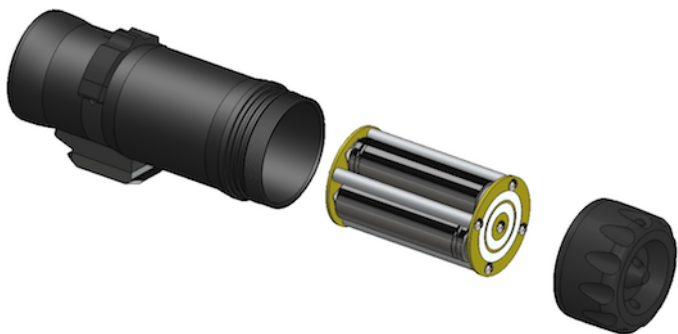
Care and Maintenance

With proper care and service, your LX20 can provide you with years of safe, enjoyable use. Without proper care, your LX20 can become damaged and be either unserviceable or dangerous to use.

- Always rinse the light and hand mount after use in saltwater.
- Periodically lubricate the double o-rings on the battery compartment with silicone lubricant.
- Store the light in a cool and dry environment.
- Always charge the batteries following the instructions provided by the manufacturer of the charger.

Travelling with the LX20

When travelling with the LX20, the battery pack must be installed backwards so that there is no chance of activation. Simply remove the battery pack, turn it around, and put it back in.





Warranty Information

The Dive Rite LX20 carries a limited lifetime warranty. Dive Rite will — at its sole discretion — repair or replace a LX20 proved to be damaged by faulty manufacture or material, at no cost, for the lifetime of the LX20.

This warranty applies only to the original retail purchaser. It does not cover commercial or rental use, nor does it extend to units purchased from other than an authorized Dive Rite dealer.

If we deem a LX20 component to be beyond repair — through no fault of the user — then, and only then, will we replace the affected component(s).

To make a claim under this warranty, the owner must have registered his/her warranty using Dive Rite's website (www.diverite.com). All warranty repairs (international or domestic) *must* be accompanied by a copy of the purchase receipt. For warranty repairs (international or domestic) the product must be returned to the *store* where the item was purchased or directly to Dive Rite. A Return Authorization must be obtained by calling Dive Rite corporate offices (386-752-1087) to send items to Dive Rite. No warranty service will be performed for other than registered owners. **Note:** Local dealers and distributors are not responsible for service of items purchased from unauthorized dealers, Internet dealers, or dealers from other territories.

This warranty becomes void if the LX20 components are damaged by anything other than normal recreational diving use, or if they have been serviced or repaired by other than authorized Dive Rite dealers.

Repairs made under this warranty will not extend the warranty period.

All further claims, especially for damage after diving accidents, are excluded from coverage under this warranty.

Dive Rite has no obligation to honor any extension of this warranty.

This warranty is in lieu of all other warranties, expressed or implied. No other person or representative is authorized to assume for Dive Rite any other liability in connection with the sale of this product.

Activating and Utilizing your Warranty

1. To activate your warranty, you must register your LX20 within 30 days of purchase through our online product warranty registration. This is located within our website at www.diverite.com.

2. Proof of original ownership is provided by your purchase receipt and should be retained for your records.
3. If you intend to receive your service directly from Dive Rite, you must first obtain a Return Merchandise Authorization (RMA) number by calling Dive Rite at 386-752- 1087. Your RMA number is to be printed on the address label of your package.